

DN-500CB upgrade procedure

1、 Install the upgrade firmware

2、 Connect the RS232 cable to the PC as below shown

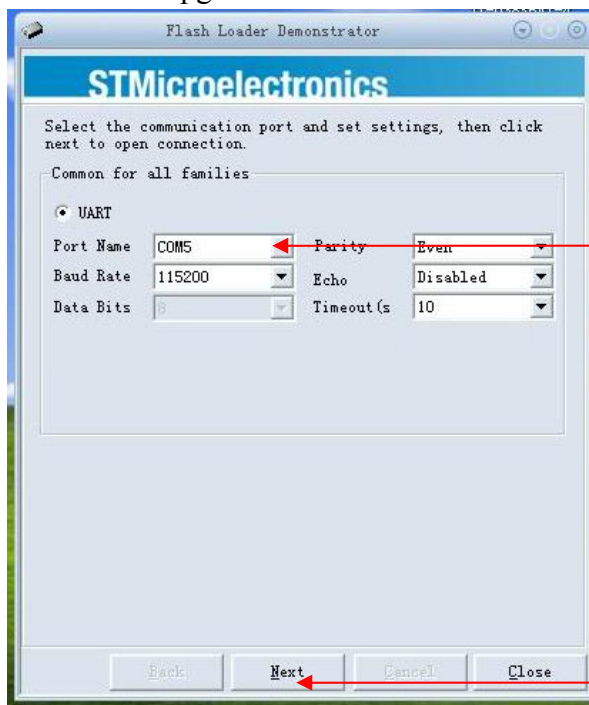


1、 Connect
PC

2、 Switch the switch to
“UPDATE” position

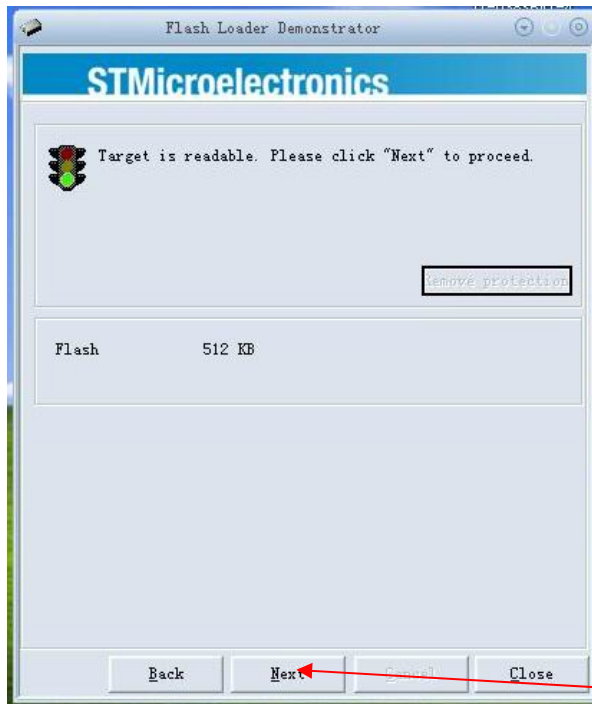
3、 Connect the power, press the power button of the front panel to “on” mode.

4、 Run the upgrade software

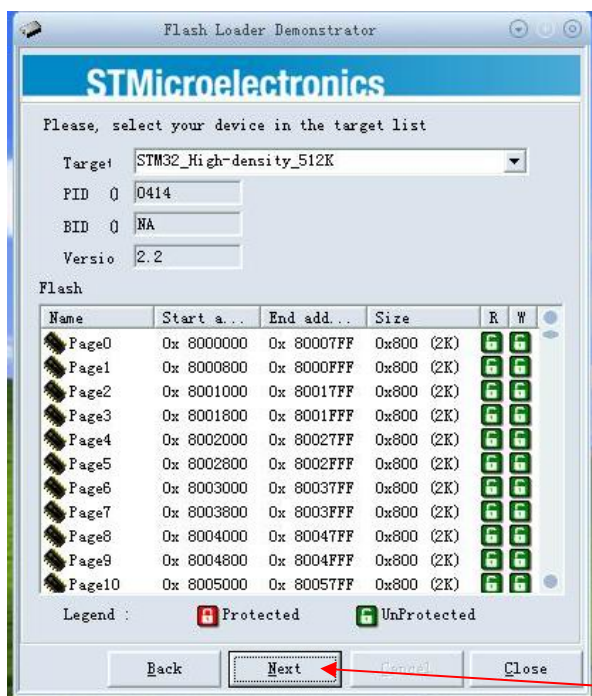


1、 Choose the COM port
from the PC

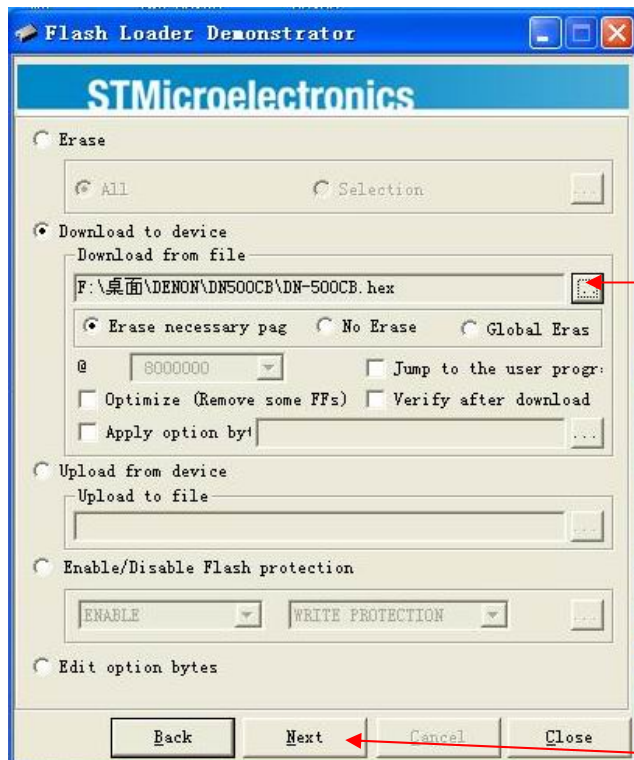
2、 Press “next”



Press "next"

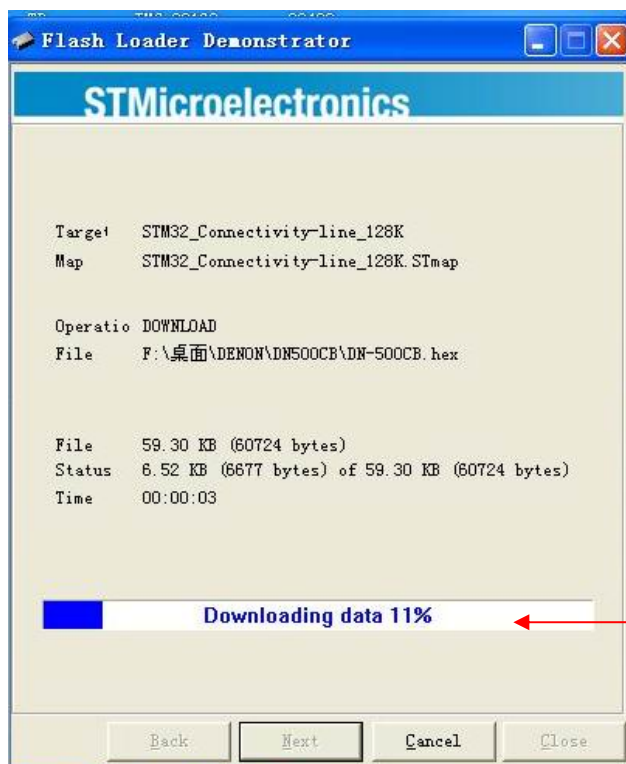


Press "next"

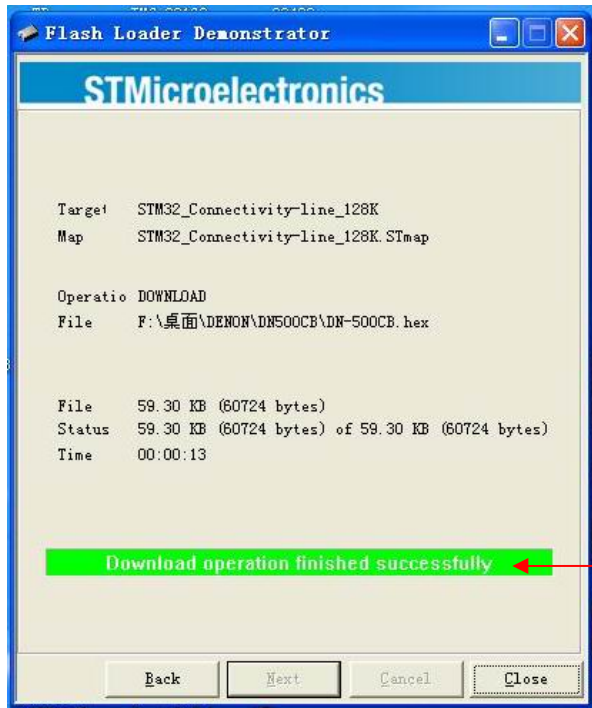


1、Press this icon to install the upgrade firmware

2、Press next



Upgrading



Upgrade completed

5、 After the upgrade completed, unplug the power. Switch the upgrade switch to “NORMAL”



Switch to “NORMAL” position

6、 Plug the power and restart the unit, long press the “PUSH ENTER” button of the front panel to enter the menu. Press “SEL | /◀◀、▶▶/ | ” function to select below menu.



Press enter and you will see below version number, upgrade succeed

